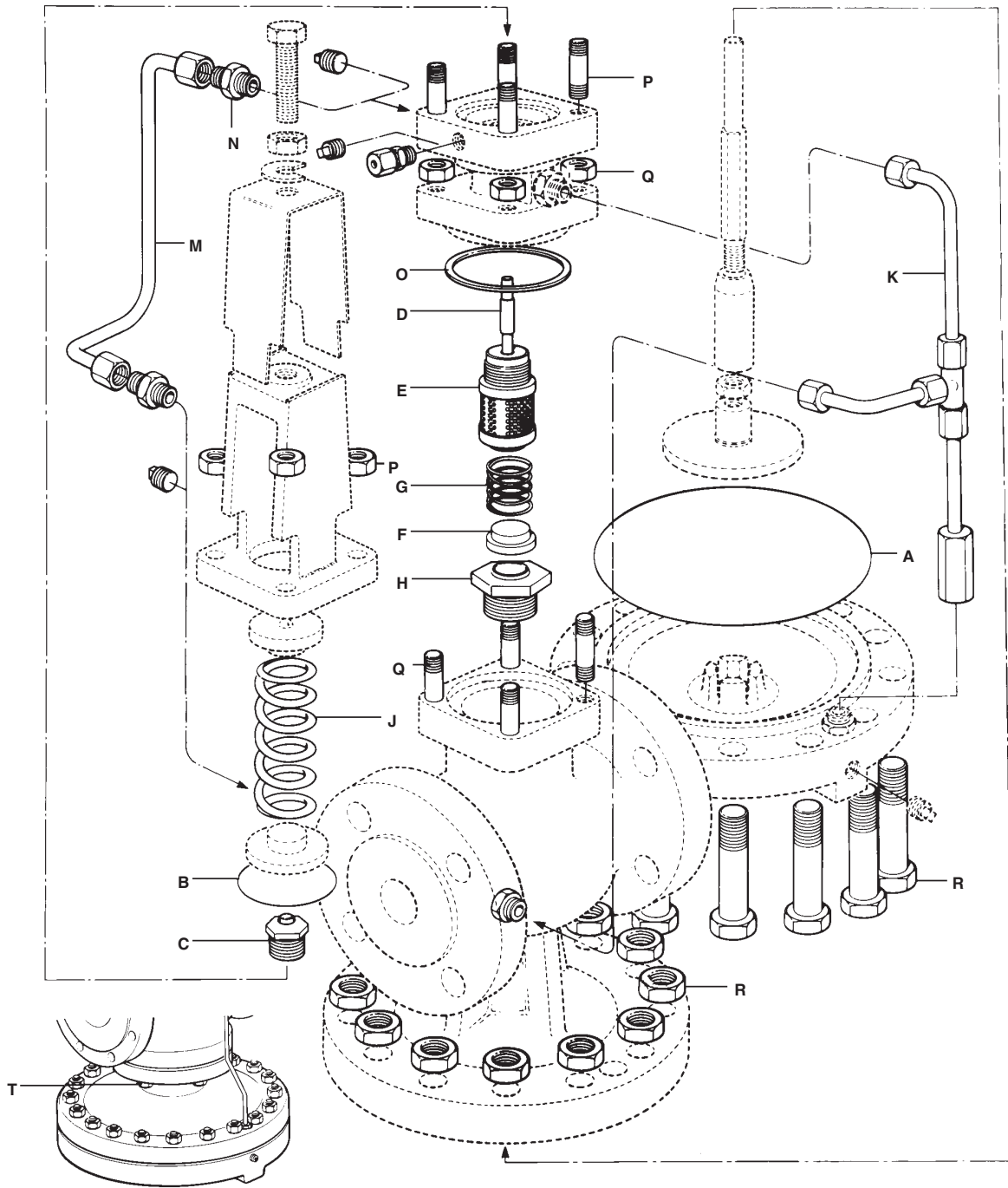


spirax sarco®

Spare Parts for the Stainless Steel Pilot Operated Pressure Regulator DP 163



Local regulation may restrict the use of this product below the conditions quoted. Limiting conditions refer to standard connections only.
In the interests of development and improvement of the product, we reserve the right to change the specification.

TI-3-082-US 05.10

Spare Parts for the Stainless Steel Pilot Operated Pressure Regulator DP 163

SPARE PARTS

Maintenance Kit		
A standby set of spares for general maintenance purposes covering all spares marked*		
* Main Diaphragm		(2 off) A
* Pilot Diaphragm		(2 off) B
Pilot Valve Seal Assembly		C
* Pilot Valve & Plunger Assembly		D,E
Main Valve Assembly		F,H
* Main Valve Return Spring		G
Pressure Adjustment Spring		
Choice of spring to suit reduced pressure		
Yellow	3 psi to 45 psi	0.2 bar to 3 bar
Red	3 psi to 250 psi	0.2 bar to 17 bar
Grey	230 psi to 304 psi	16 bar to 21 bar
* Control Pipe Assembly		K
Balance Pipe Assembly		M,N
* Body Gasket	(packet of 3)	O
Set of Spring Housing		P
Securing Studs & Nuts		(set of 4)
Set of Pilot Valve Housing		Q
Securing Studs & Nuts		(set of 4)
Set of Diaphragm Chamber		R
Securing Bolts & Nuts		
1/2" & 3/4" - DN 15 & 20	set of 10	
1" & 1-1/4" - DN 25 & 30	set of 12	
1-1/2" & 2" - DN 40 & 50	set of 16	
3" - DN 80	set of 20	
Set of Main Body Studs & Nuts 3" DN 80		(set of 6) T

INTERCHANGEABILITY OF SPARES

The following table shows how some parts are interchangeable. For example, the line headed main diaphragm indicates that the diaphragm used in sizes 1/2" LC, 1/2" & 3/4" DN 15 LC, DN 15 and DN 20, is common to those sizes by the letter 'a'. The letter 'b' indicates that sizes 1" and 1-1/4" DN 25 and DN 32, use a common diaphragm.

	Valve Size DN							
	1/2" LC	1/2"	3/4"	1"	1-1/4"	1-1/2"	2"	3"
	15	15	20	25	32	40	50	80
* Main Diaphragm	a	a	a	b	b	c	c	d
* Pilot Diaphragm	a	a	a	a	a	a	a	a
Pilot Valve Seal Assembly	a	a	a	a	a	a	a	a
* Pilot Valve & Plunger Assembly	a	a	a	a	a	a	a	a
Main Valve Assembly	a	b	c	d	e	f	g	h
* Main Valve Return Spring	a	a	a	b	b	c	c	d
Pressure Adjustment Spring	a	a	a	a	a	a	a	a
* Control Pipe Assembly	a	a	b	c	d	e	f	g
Balance Pipe Assembly	a	a	b	c	d	e	f	g
* Body Gasket	a	a	a	b	b	c	c	d
Set of Spring Housing	a	a	a	a	a	a	a	a
Securing Studs & Nuts								
Set of Pilot Valve Housing	a	a	a	b	b	c	c	d
Securing Studs & Nuts								
Set of Diaphragm Chamber	a	a	a	b	b	c	c	d
Securing Bolts & Nuts								
Set of Main Body Studs & Nuts	-	-	-	-	-	-	-	a