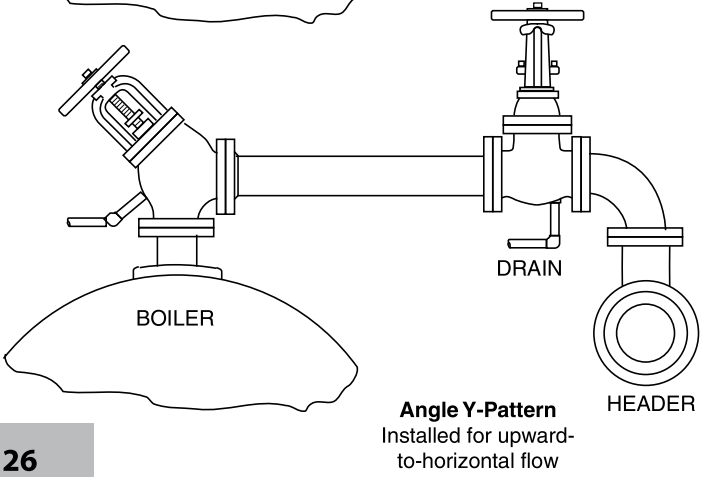
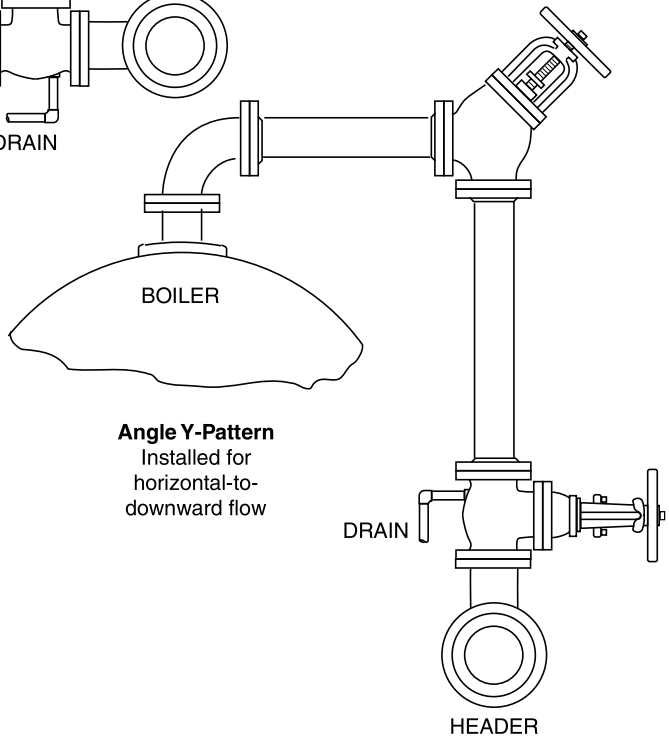
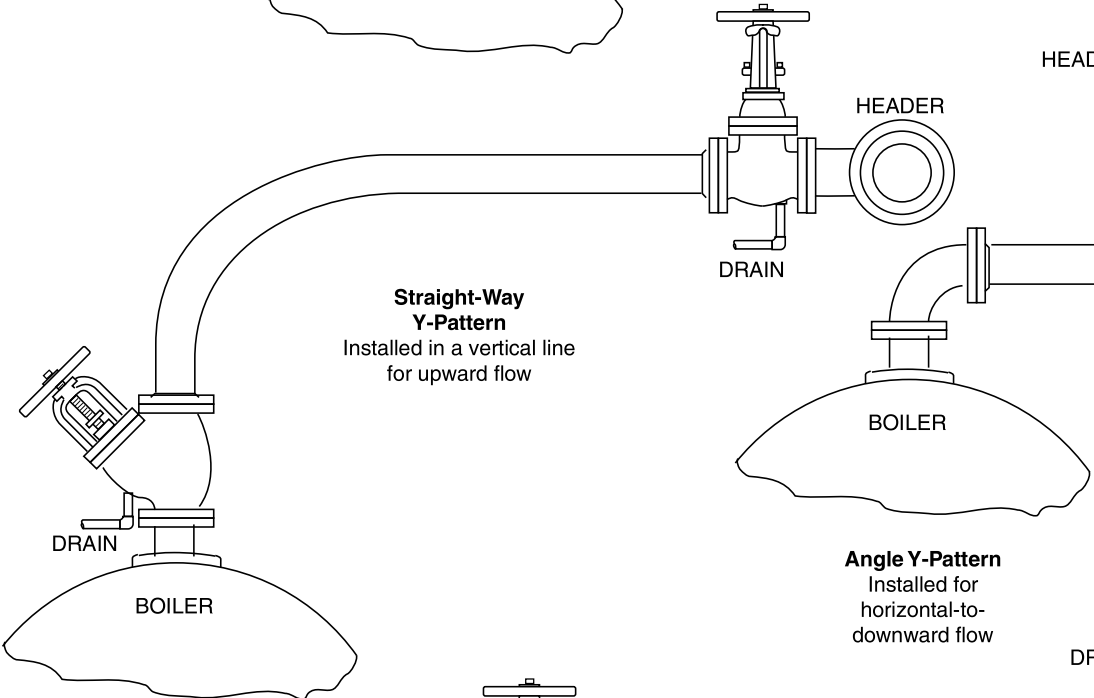
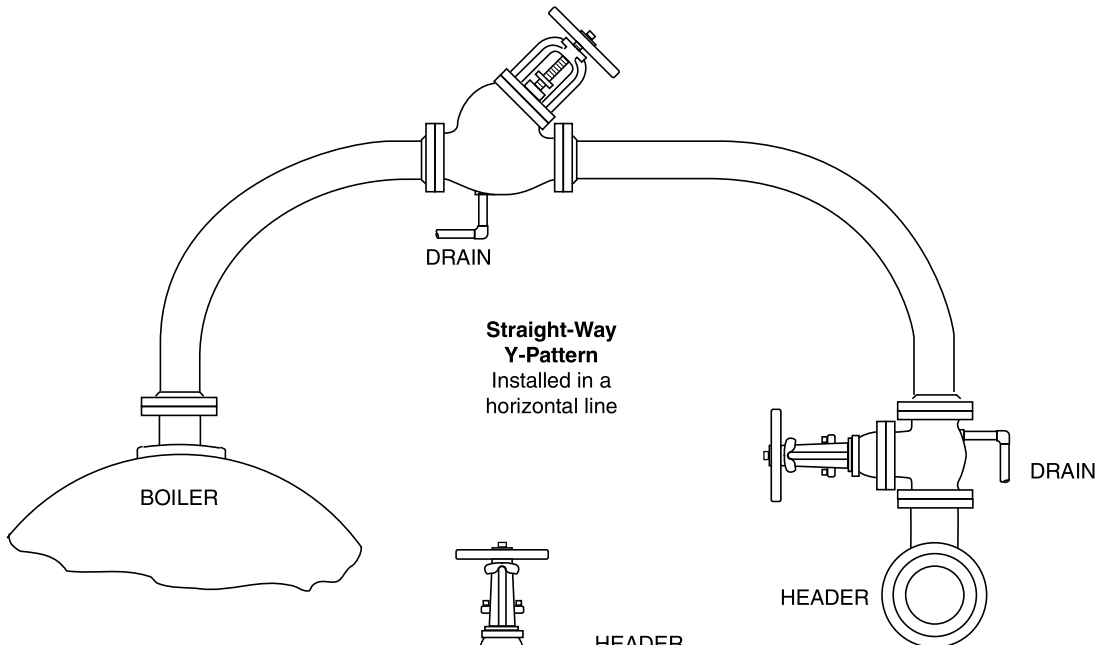


Installation Recommendations



As shown in these diagrams, CRANE® Y-Pattern stop-check valves used in a boiler installation can be positioned for horizontal or upward flow. The proper method for draining both Y-pattern stop-check valves and isolation gate valves is shown for typical mounting positions. Tapped and plugged drain holes are furnished. For top efficiency, be sure the proper size valve is used.