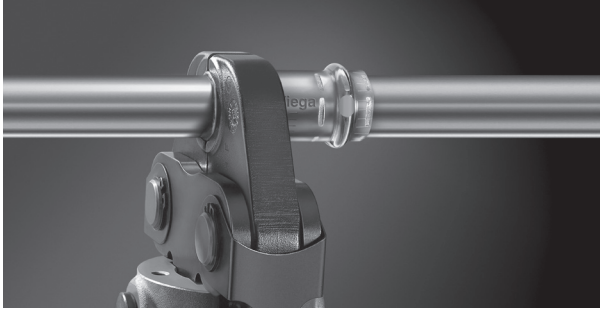


## Product Instructions

# Viega ProPress Stainless Fittings

## EN Product Instructions Viega ProPress® Stainless

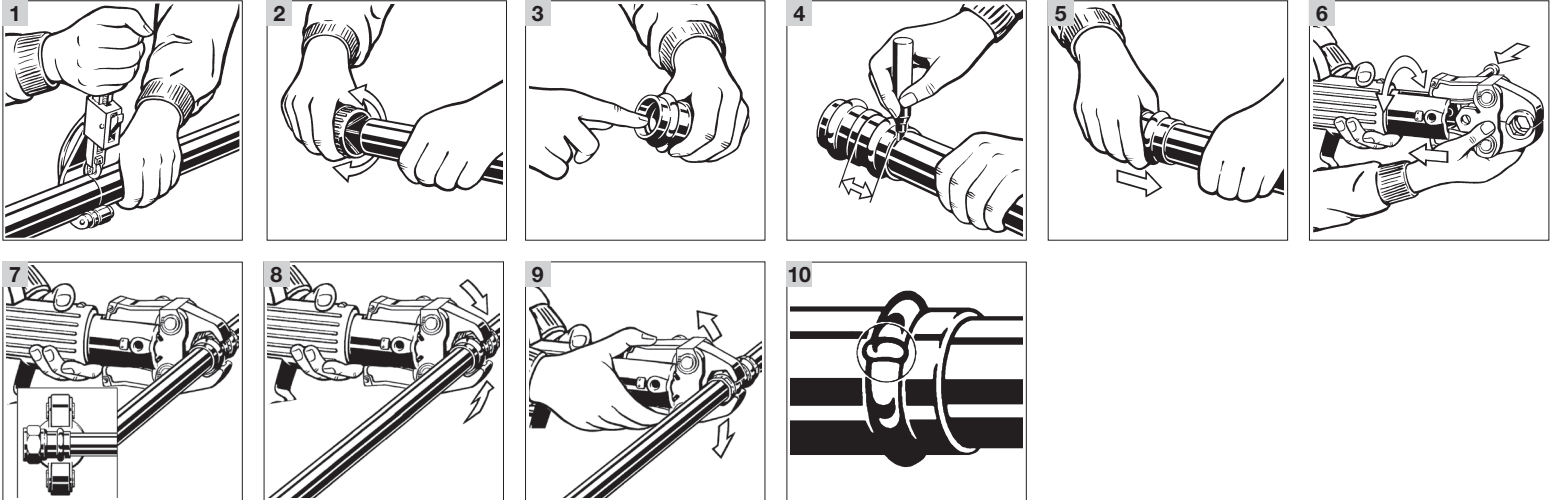
This document is subject to updates. For the most current Viega technical literature please visit [www.viega.us](http://www.viega.us).



> **Viega LLC**  
585 Interlocken Blvd.  
Broomfield, CO 80021

Phone (800) 976-9819  
[www.viega.us](http://www.viega.us)

PI-PP 518526 0219 ProPress Stainless Fittings



EN

## Viega ProPress® Stainless

### ½" to 2" Fittings

For use only with Viega stainless steel tubing.

**! DANGER!**  
Read and understand all instructions for installing Viega ProPress Stainless fittings. Failure to follow all instructions may result in extensive property damage, serious injury or death.

**! WARNING!**  
Viega products are designed to be installed by licensed and trained plumbing and mechanical professionals who are familiar with Viega products and their installation. **Installation by non-professionals may void Viega LLC's warranty.**

- 1 Cut stainless steel tubing only with an approved stainless steel pipe cutting tool. Cut the tube square using a displacement-type cutter or fine toothed saw.  
**Note:** Cut tubing a minimum of four inches away from the contact area of the vise to prevent possible damage to the tubing in the press area.
- 2 Deburr inside and outside of the tube to the proper insertion depths to prevent cutting sealing element. Use a wire brush, Scotchbrite pad, sand cloth, or sandpaper to remove loose dirt and rust particles from the pressing area.

- 3 Check the sealing element for correct fit. Do not use oils or lubricants. Use only Viega ProPress shiny black EPDM or dull black FKM sealing elements.

**i** For applications requiring Viega ProPress with FKM sealing elements, remove the factory-installed EPDM sealing element and replace with FKM sealing element.

- 4 Mark the proper insertion depth as indicated by the Viega ProPress Stainless Insertion Depth Chart. Improper insertion depth may result in an improper seal.

#### Viega ProPress Stainless Insertion Depth Chart

Tube Size	½"	¾"	1"	1¼"	1½"	2"
Insertion Depth	¾"	⅞"	⅞"	1"	1⅛"	1⅞"

- 5 While turning slightly, slide press fitting onto tubing to the marked depth. End of tubing must contact stop.
- 6 Insert appropriate Viega ProPress jaw into the press tool and push in, holding pin until it locks in place.

**! WARNING!**  
Keep extremities and foreign objects away from press tool during pressing operation to prevent injury or incomplete press.

- 7 Open the jaw and place at right angle on the fitting. Visually check insertion depth using mark on tubing.

- 8 Hold trigger on press tool until press jaws have fully engaged the fitting. Jaws will automatically release after a full press is made.
- 9 After pressing, open the jaw and remove the press tool.
- 10 Pressure testing with Smart Connect:  
Unpressed connections are located by pressurizing the system with air or water. When testing with water the proper pressure range is 15 psi to 85 psi. When testing with compressed air the proper pressure range is ½ psi to 45 psi maximum. If testing with compressed air, use an approved leak-detect solution. Following a successful pressure test, the system may be pressure tested up to 200 psi with air or up to 600 psi with water.

**i** Testing for unpressed connections using Smart Connect is not a replacement for pressure testing requirements of local codes and standards.

**! CAUTION!**  
It is the responsibility of designers of piping systems to verify the suitability of type 304 and 316 stainless steel pipe for use with the intended fluid media. The fluid's chemical composition, pH level, operation temperature, chloride level, oxygen level, and flow rate and their effect on AISI type 304 or 316 stainless steel must be evaluated by the material specifier to confirm system life will be adequate for the intended service. Failure to do so may cause serious personal injury or property damage. Contact Viega Technical Services for questions and approvals.