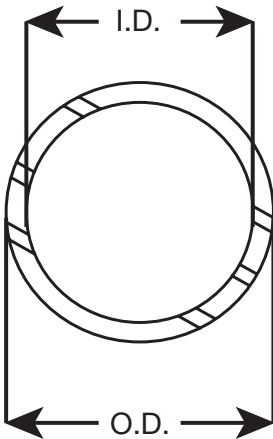


Dimensional Documentation



Viega® ProPress® for Stainless 1/2" - 2"

Viega ProPress Pipe Stainless Steel ASTM A312 - Models 0103 / 4003

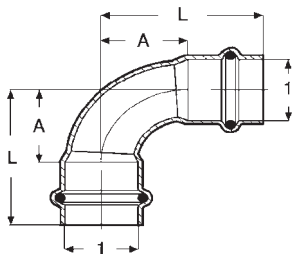


Part Number		Size	O.D.	I.D.	Wall Thickness	Length
S/S 304	S/S 316		(in)	(in)	(in)	(ft)
87000	82000	1/2"	0.63	0.50	0.06	20
87005	82005	3/4"	0.88	0.75	0.06	20
87010	82010	1"	1.13	1.00	0.06	20
87015	82015	1 1/4"	1.38	1.26	0.06	20
87020	82020	1 1/2"	1.63	1.50	0.06	20
87025	82025	2"	2.13	2.00	0.06	20

Viega ProPress ECO-Pipe Stainless Steel ASTM A554 - Model 0108

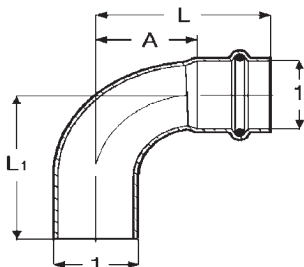
Part Number	Size	O.D.	I.D.	Wall Thickness	Length
S/S 304		(in)	(in)	(in)	(ft)
87050	1/2"	0.63	0.55	0.04	20
87055	3/4"	0.88	0.78	0.05	20
87060	1"	1.13	1.03	0.05	20
87065	1 1/4"	1.38	1.26	0.06	20
87070	1 1/2"	1.63	1.51	0.06	20
87075	2"	2.13	2.01	0.06	20

Viega ProPress 90° Elbow Stainless Steel P x P - Models 6016 / 4016



Part Number		Size	A	L
S/S 304	S/S 316	1	(in)	(in)
85402	80400	1/2"	1.12	1.87
85407	80405	3/4"	1.73	2.64
85412	80410	1"	1.87	2.78
85417	80415	1 1/4"	1.65	2.69
85422	80420	1 1/2"	1.98	3.41
85427	80425	2"	2.55	4.14

Viega ProPress 90° Elbow Stainless Steel FTG x P - Models 6016.1 / 4016.1



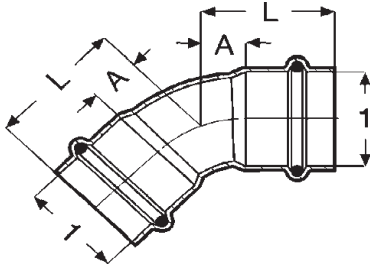
Part Number		Size	A	L	L1
S/S 304	S/S 316	1	(in)	(in)	(in)
85492	80490	1/2"	1.12	1.87	1.99
85497	80495	3/4"	1.45	2.35	3.03
85502	80500	1"	1.87	2.78	3.27
NA	80505	1 1/4"	1.65	2.69	2.76
85512	80510	1 1/2"	1.98	3.41	3.48
85517	80515	2"	2.55	4.14	4.20

Dimensional Documentation

viega

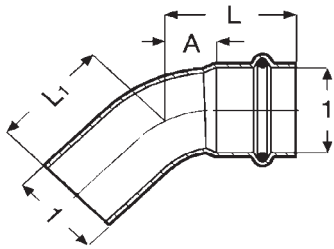


Viega ProPress 45° Elbow Stainless Steel P x P - Models 6026 / 4026



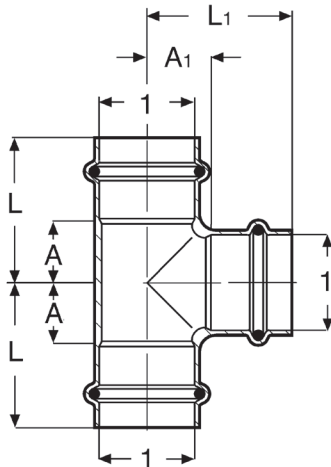
Part Number		Size	A	L
S/S 304	S/S 316	1	(in)	(in)
85447	80445	½"	0.57	1.32
85452	80450	¾"	0.87	1.77
85457	80455	1"	0.89	1.79
85462	80460	1¼"	0.69	1.72
85467	80465	1½"	0.82	2.25
85472	80470	2"	1.06	2.64

Viega ProPress 45° Elbow Stainless Steel FTG x P - Models 6026.1 / 4026.1



Part Number		Size	A	L	L1
S/S 304	S/S 316	1	(in)	(in)	(in)
85537	80535	½"	0.57	1.32	1.46
85542	80540	¾"	0.69	1.59	2.27
85547	80545	1"	0.89	1.79	2.28
NA	80550	1¼"	0.69	1.72	1.79
85557	80555	1½"	0.82	2.25	2.32
85562	80560	2"	1.06	2.64	2.71

Viega ProPress Tee Stainless Steel P x P x P - Models 6018 / 4018

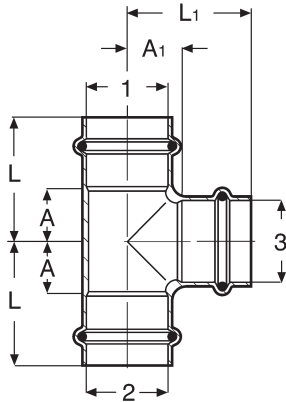


Part Number		Size	A	A1	L	L1
S/S 304	S/S 316	1	(in)	(in)	(in)	(in)
85582	80580	½"	0.75	0.87	1.50	1.61
85587	80585	¾"	0.96	0.96	1.86	1.86
85592	80590	1"	1.13	1.18	2.04	2.09
85597	80595	1¼"	1.04	1.05	2.08	2.07
85598	80600	1½"	1.26	1.22	2.69	2.65
85607	80605	2"	1.54	1.53	3.12	3.11

Dimensional Documentation

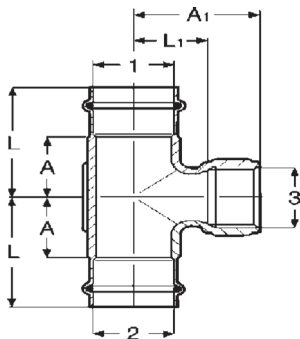
viega

Viega ProPress Reducing Tee Stainless Steel P x P x P - Models 6018 / 4018



Part Number		Size			A	A1	L	L1
S/S 304	S/S 316	1	2	3	(in)	(in)	(in)	(in)
85632	80630	3/4"	3/4"	1/2"	0.96	0.98	1.86	1.73
85642	80640	1"	1"	1/2"	1.13	1.13	2.04	1.88
85652	80650	1"	1"	3/4"	1.13	1.10	2.04	2.01
85662	80660	1 1/4"	1 1/4"	1/2"	0.75	1.28	1.78	2.03
85672	80670	1 1/4"	1 1/4"	3/4"	0.83	1.25	1.86	2.16
85682	80680	1 1/4"	1 1/4"	1"	1.04	1.33	2.08	2.24
85692	80690	1 1/2"	1 1/2"	1/2"	1.26	1.39	2.69	2.14
85702	80700	1 1/2"	1 1/2"	3/4"	1.26	1.37	2.69	2.27
85712	80710	1 1/2"	1 1/2"	1"	1.26	1.44	2.69	2.35
85722	80720	2"	2"	1/2"	0.71	1.65	2.30	2.40
85732	80730	2"	2"	3/4"	0.71	1.63	2.30	2.53
85742	80740	2"	2"	1"	0.83	1.70	2.41	2.61
85752	80750	2"	2"	1 1/2"	1.15	1.49	2.73	2.91

Viega ProPress Reducing Tee Stainless Steel P x P x FPT - Models 6017.2 / 4017.2

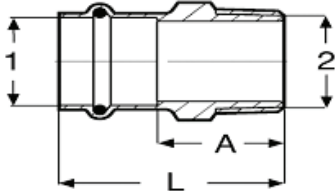


Part Number		Size			A	A1	L	L1
S/S 304	S/S 316	1	2	3	(in)	(in)	(in)	(in)
85822	80820	3/4"	3/4"	1/2" FPT	0.96	0.76	1.86	1.26
85832	80830	3/4"	3/4"	3/4" FPT	0.96	0.78	1.86	1.34
85842	80840	1"	1"	1/2" FPT	1.13	0.87	2.04	1.41
85852	80850	1"	1"	3/4" FPT	1.13	0.93	2.04	1.48
85862	80860	1 1/4"	1 1/4"	1/2" FPT	0.75	1.02	1.78	1.56
85872	80870	1 1/4"	1 1/4"	3/4" FPT	0.83	1.08	1.86	1.63
85882	80880	1 1/4"	1 1/4"	1" FPT	1.04	1.09	2.08	1.75
85892	80890	1 1/2"	1 1/2"	1/2" FPT	1.26	1.13	2.69	1.67
85902	80900	1 1/2"	1 1/2"	3/4" FPT	1.26	1.19	2.69	1.75
85912	80910	1 1/2"	1 1/2"	1" FPT	1.26	1.20	2.69	1.87
85922	80920	2"	2"	1/2" FPT	0.71	1.39	2.30	1.93
85932	80930	2"	2"	3/4" FPT	0.71	1.45	2.30	2.01
85942	80940	2"	2"	1" FPT	0.83	1.50	2.41	2.13

Dimensional Documentation

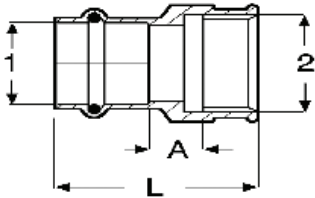
viega

Viega ProPress Adapter Stainless Steel P x MPT - Models 6011 / 4011



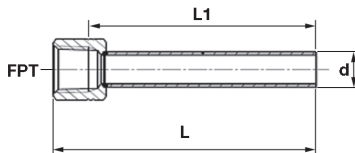
Part Number		Size		A	L
S/S 304	S/S 316	1	2	(in)	(in)
85012	80010	1/2" x 1/2" MPT		1.37	2.11
85017	80015	1/2" x 3/4" MPT		1.44	2.19
85022	80020	3/4" x 1/2" MPT		1.42	2.32
85027	80025	3/4" x 3/4" MPT		1.46	2.36
85032	80030	3/4" x 1" MPT		1.71	2.62
85037	80035	1" x 3/4" MPT		1.47	2.37
85042	80040	1" x 1" MPT		1.74	2.65
85047	80045	1 1/4" x 1 1/4" MPT		1.89	2.92
85052	80050	1 1/2" x 1 1/2" MPT		1.94	3.37
85054	80055	2" x 2" MPT		2.10	3.68

Viega ProPress Adapter Stainless Steel P x FPT - Models 6012 / 4012



Part Number		Size		A	L
S/S 304	S/S 316	1	2	(in)	(in)
85082	80080	1/2" x 1/2" FPT		0.54	1.82
85087	80085	3/4" x 1/2" FPT		0.51	1.95
85096	80090	3/4" x 3/4" FPT		0.57	2.03
85094	80092	1" x 1/2" FPT		0.62	2.06
85097	80095	1" x 3/4" FPT		0.62	2.08
85128	80100	1" x 1" FPT		0.61	2.18
85107	80105	1 1/4" x 1 1/4" FPT		0.62	2.33
	80110	1 1/2" x 1 1/4" FPT		0.69	2.80
85117	80115	1 1/2" x 1 1/2" FPT		0.69	2.80
85077	80075	2" x 1" FPT		0.75	2.99
85122	80120	2" x 1 1/2" FPT		0.73	2.99
85127	80125	2" x 2" FPT		0.71	2.99

Viega ProPress Instrument Adapter Stainless Steel - Model 4012.5

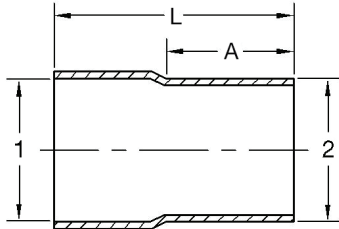


Part Number	Size	L	L1
S/S 316	FPT x FTG (d)	(in)	(in)
80126	1/2" x 1/2"	4.06	3.52
80127	3/4" x 3/4"	3.94	3.38

Dimensional Documentation

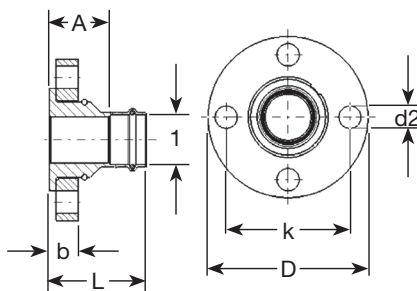
viega

Viega ProPress Adapter Stainless Steel FTG x Weld - Model 0113.3 / 4013.3



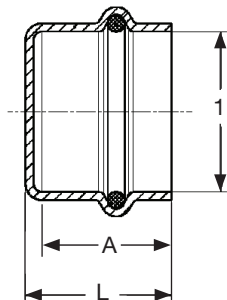
Part Number		Size		A	L
S/S 304	S/S 316	1	2	(in)	(in)
86003	81138	½" ID	½" OD	2.40	0.87
86008	81143	¾" ID	¾" OD	2.74	1.02
86013	81148	1" ID	1" OD	2.78	1.06
86023	81158	1½" ID	1½" OD	4.12	1.57
86028	81163	2" ID	2" OD	4.27	1.73

Viega ProPress Adapter Flange Stainless Steel P x Flange - Models 6059 / 4059



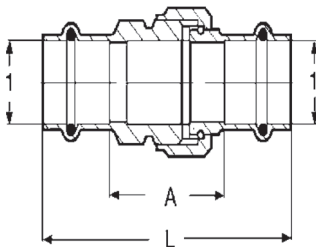
Part Number		Size	L	A	b	d2	D	k
S/S 304	S/S 316	1	(in)	(in)	(in)	(in)	(in)	(in)
86082	81035	½"	2.46	1.72	0.46	0.63	3.54	2.36
86087	81040	¾"	2.57	1.66	0.52	0.63	3.94	2.76
86092	81045	1"	2.51	1.60	0.58	0.63	4.33	3.11
86097	81050	1¼"	2.69	1.66	0.64	0.63	4.53	3.50
86102	81055	1½"	2.83	1.41	0.70	0.63	4.92	3.86
86107	81060	2"	3.86	2.30	0.77	0.75	5.91	4.76

Viega ProPress Cap Stainless Steel P - Models 6056 / 4056



Part Number		Size	A	L
S/S 304	S/S 316	1	(in)	(in)
85357	80355	½"	0.70	0.82
85362	80360	¾"	0.93	1.04
86367	80365	1"	0.94	1.06
86372	80370	1¼"	1.04	1.20
86377	80375	1½"	1.44	1.59
86382	80380	2"	1.59	1.74

Viega ProPress Union Stainless Steel P x P - Models 6060 / 4060

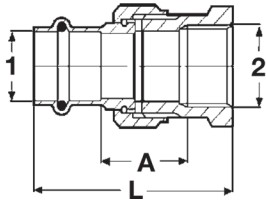


Part Number		Size	A	L
S/S 304	S/S 316	1	(in)	(in)
86007	81005	½"	1.87	3.37
86012	81010	¾"	1.89	3.70
86017	81015	1"	2.25	4.06
86022	81020	1¼"	2.25	4.31
86027	81025	1½"	2.68	5.53
86032	81030	2"	2.95	6.12

Dimensional Documentation

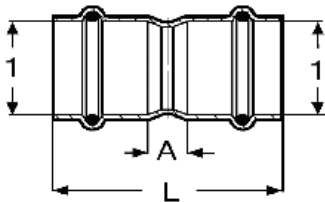
viega

Viega ProPress Di-electric Union Stainless Steel P x FPT - Model 4067



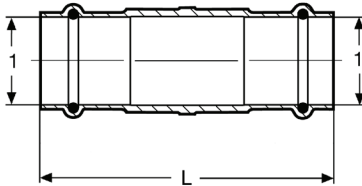
Part Number	Size	A	L
S/S 316	1 2	(in)	(in)
80071	1/2" x 1/2" FPT	1.28	2.57
80078	3/4" x 3/4" FPT	1.39	2.85
80073	1" x 1" FPT	1.25	2.81
80074	1 1/4" x 1 1/4" FPT	1.33	3.04
80076	1 1/2" x 1 1/2" FPT	1.54	3.64
80077	2" x 2" FPT	1.72	4.00

Viega ProPress Coupling with Stop Stainless Steel P x P - Models 6015 / 4015



Part Number	Size	A	L
S/S 304	S/S 316	1	(in)
85267	80265	1/2"	1.85
85272	80270	3/4"	2.24
85277	80275	1"	2.20
85282	80280	1 1/4"	2.54
85287	80285	1 1/2"	3.21
85292	80290	2"	3.64

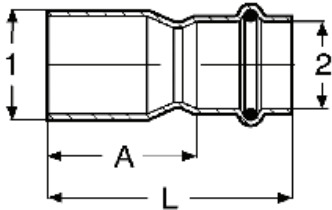
Viega ProPress Coupling No Stop Stainless Steel P x P - Models 6015.5 / 4015.5



Part Number	Size	L
S/S 304	S/S 316	1
85312	80310	1/2"
85317	80315	3/4"
85322	80320	1"
85327	80325	1 1/4"
85332	80330	1 1/2"
85337	80335	2"

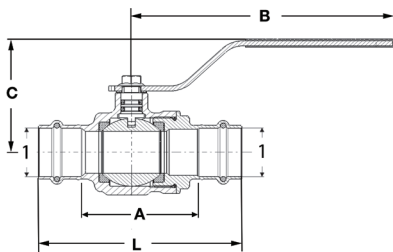
Dimensional Documentation

viega



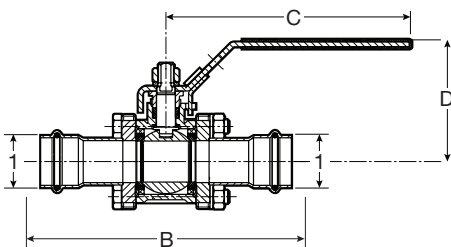
Viega ProPress Reducer Stainless Steel FTG x P - Models 6015.1 / 4015.1

Part Number		Size	A	L
S/S 304	S/S 316	1 2	(in)	(in)
85162	80160	¾" x ½"	1.54	2.28
85167	80165	1" x ½"	1.84	2.59
85172	80170	1" x ¾"	1.56	2.46
85173	80175	1¼" x ½"	2.25	3.00
85182	80180	1¼" x ¾"	1.93	2.83
85187	80185	1¼" x 1"	1.81	2.72
85192	80190	1½" x ½"	3.03	3.78
85197	80195	1½" x ¾"	2.64	3.54
85202	80200	1½" x 1"	2.50	3.41
NA	80205	1½" x 1¼"	2.26	3.29
85212	80210	2" x ½"	3.75	4.50
85217	80215	2" x ¾"	3.48	4.39
85222	80220	2" x 1"	3.08	3.99
NA	80225	2" x 1¼"	2.94	3.97
85232	80230	2" x 1½"	2.59	4.02



Viega ProPress Ball Valve Stainless Steel P x P - Model 4070

Part Number	Size	A	L	B	C
S/S 316	1	(in)	(in)	(in)	(in)
81080	½"	2.06	3.56	5.55	2.44
81085	¾"	2.42	4.23	5.55	2.52
81090	1"	2.76	4.59	5.55	2.68
81095	1¼"	3.17	5.23	6.10	3.09
81100	1½"	3.65	6.50	6.10	3.34
81105	2"	4.15	7.32	6.10	3.66



Viega ProPress 3-Piece Ball Valve Stainless Steel P x P - Model 4370.8

Part Number	Size	B	C	D
S/S 316	1	(in)	(in)	(in)
85132	½"	5.41	3.99	2.28
85133	¾"	5.79	5.88	2.85
85134	1"	6.00	5.88	2.93
85136	1¼"	6.61	7.54	3.27
85137	1½"	7.26	7.54	3.57
85138	2"	9.67	7.54	3.89

Viega products are designed to be installed by licensed and trained plumbing and mechanical professionals who are familiar with our products' proper use and installation. Installation by non-professionals may void Viega LLC's warranty.

This document subject to updates. For the most current Viega technical literature please visit www.viega.us.
Click Services -> Click Electronic Literature Downloads -> Select Product Line -> Select Desired Document

Viega LLC, 100 N. Broadway, 6th Floor • Wichita, KS 67202 • Ph: 800-976-9819 • Fax: 316-425-7618