

Part No: 851-160F

Fabricated Fittings

Flanges and Cut in Kits

Desc: 16 PVC ONE-PIECE FLANGE SOC CL150 150PSI

MSRP: 4274.24

Part Code: 083

Weight(lbs): 40.124

Weight(kg): 18.2

Weight(gm): 18200

Size: 16

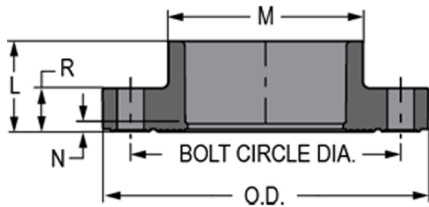
Color: GRAY

Material: PVC

Joint Style Socket (One Piece)

Connection Socket

Ring Plastic



L = 8-9/16

M = 17-3/4

N = 9/16

R = 2-3/8

Bolt Circle Dia. = 21-1/4

Bolt Size = 1

O.D. = 23-1/2

Min. Bolt Length = 6-1/2

No of Bolts = 16

Fabricated Dimension References:

G = (LAYING LENGTH) intersection of center lines to bottom of socket/thread; 90° elbows, tees, crosses; ± 1/4 & larger ± 1/2 inch.

H = Intersection of center lines to face of fitting; 90° elbows, tees, crosses; ± 1/4 inch.; wyes ± 1/2 inch; 14" & larger inch.

J = Intersection of center lines to bottom of socket/thread; 45° elbows; ± 1/4 inch; 14" & larger ± 1/2 inch.

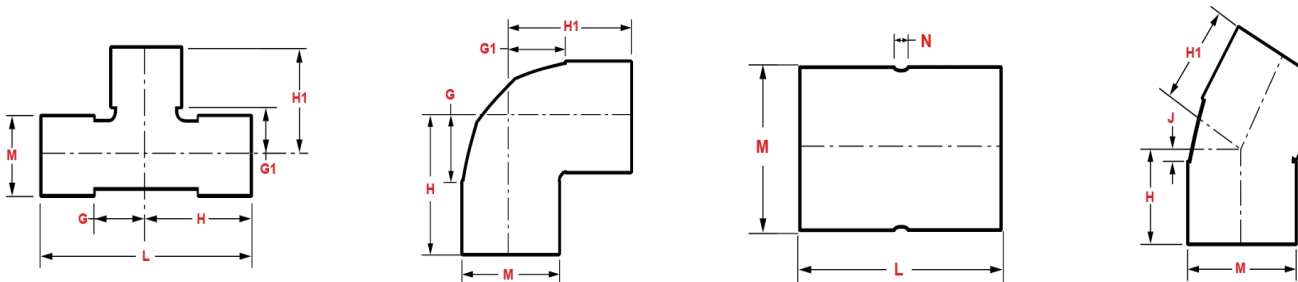
L = Overall length of fittings; ± 1/2 inch; wyes ± 1 inch; 14" & larger ± 1 inch.

M = Outside diameter of socket/thread hub; ± 1/4 inch.

N = Socket bottom to socket bottom; couplings; ± 1/2 inch.

W = Height of cap; ± 1/4 inch.

Typical Fabricated Dimension References



The information printed here is based on current information & product design at the time of publication and is subject to change without notification. Spears® ongoing commitment to product improvement may result in some variation. No representation, guarantees or warranties of any kind are as to its accuracy, suitability for particular application or results to be obtained therefrom. For verification of technical data or additional information, please contact Spears® Technical Service Department :: WEST COAST : (818) 364-1611 - EAST COAST : (717) 938-9006