

Part No: 801-756F

Fabricated Fittings
Tees
Desc: 16X6 PVC RED TEE SOC SCH80 FAB

MSRP: 2758.69

Part Code: 083

Weight(lbs): 77.775

Weight(kg): 35.278

Weight(gm): 35278

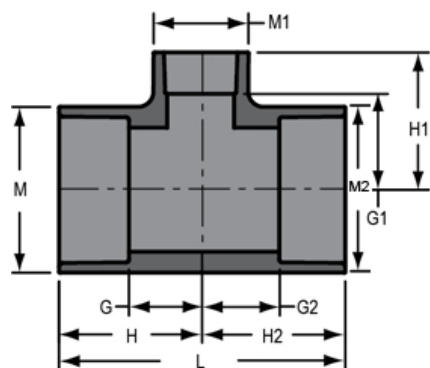
Size: 16"X16"X6"

Color: GRAY

Material: PVC

Schedule Schedule 80

Connection Socket X Socket X Socket

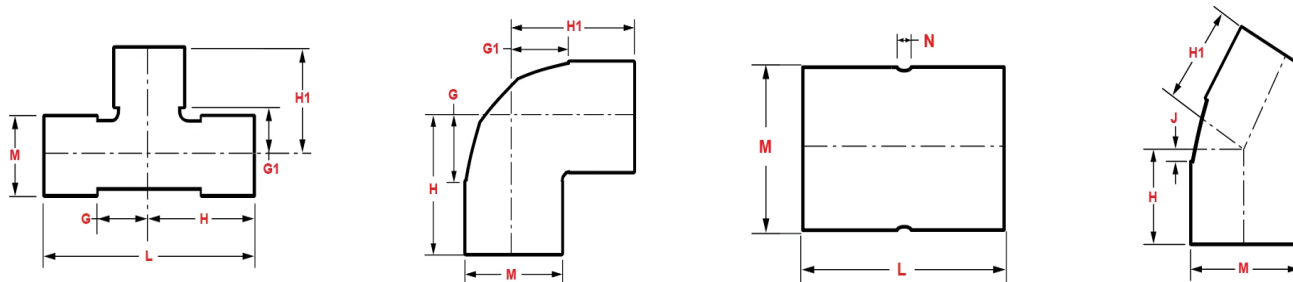
Type Reduction


G = 8- 5/8	G1 = 11- 7/16	G2 = 8- 5/8	H = 16- 5/8	H1 = 14-11/16
H2 = 16- 5/8	L = 33- 1/4	M = 17-11/16	M1 = 7- 1/2	M2 = 17- 11/16

Fabricated Dimension References:

- G** = (LAYING LENGTH) intersection of center lines to bottom of socket/thread; 90° elbows, tees, crosses; ± 1/4 & larger ± 1/2 inch.
- H** = Intersection of center lines to face of fitting; 90° elbows, tees, crosses; ± 1/4 inch.; wyes ± 1/2 inch; 14" & larger inch.
- J** = Intersection of center lines to bottom of socket/thread; 45° elbows; ± 1/4 inch; 14" & larger ± 1/2 inch.
- L** = Overall length of fittings; ± 1/2 inch; wyes ± 1 inch; 14" & larger ± 1 inch.
- M** = Outside diameter of socket/thread hub; ± 1/4 inch.
- N** = Socket bottom to socket bottom; couplings; ± 1/2 inch.
- W** = Height of cap; ± 1/4 inch.

Typical Fabricated Dimension References



The information printed here is based on current information & product design at the time of publication and is subject to change without notification. Spears® ongoing commitment to product improvement may result in some variation. No representation, guarantees or warranties of any kind are as to its accuracy, suitability for particular application or results to be obtained therefrom. For verification of technical data or additional information, please contact Spears® Technical Service Department :: WEST COAST : (818) 364-1611 - EAST COAST : (717) 938-9006