

**Part No:** 2223-012C

**Valves**

**Ball Check Valve**

**Desc:** 1-1/4 CPVC TU BALL CHECK VALVE FLGD EPDM

**MSRP:** 456.73

**Part Code:** 222

**Weight(lbs):** 2.765

**Weight(kg):** 1.254

**Weight(gm):** 1254

**Size:** 1-1/4"

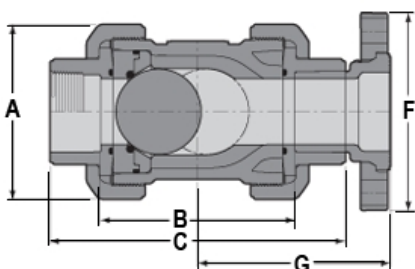
**Color:** GRAY

**Material:** CPVC

**Connection** Flanged (Regular Style)

**O-Ring** EPDM

**Pressure Rating** 150 psi @ 73° F



A = 3-11/16

B = 4- 1/2

C = 7

F = 4- 5/8

G = 4- 9/16

Cv = 142

**Values**

## Injection Molded Dimension References:

**G** = (LAYING LENGTH) intersection of center lines to bottom of socket/thread; 90° elbows, tees, crosses; ± 1/32 inch.

**H** = Intersection of center lines to face of fitting; 90° elbows tees, crosses; ± 1/32 inch.

**J** = Intersection of center lines to bottom of socket/thread; 45° elbows; ± 1/32 inch

**L** = Overall length of fittings; ± 1/16 inch.

**M** = Outside diameter of socket/thread hub; ± 1/16 inch.

**N** = Socket bottom to socket bottom; couplings; ± 1/16 inch.

**W** = Height of cap; ± 1/16 inch

## Typical Molded Dimension References

