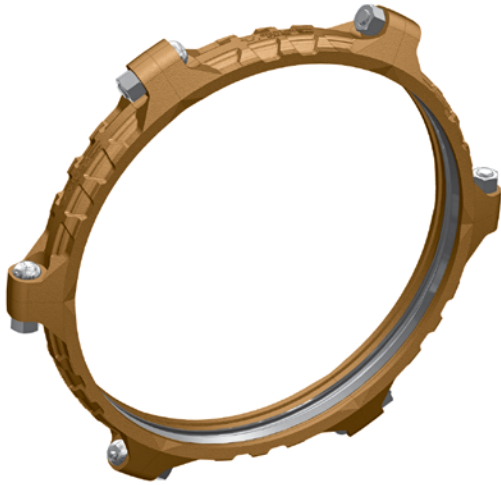


FIG. 7022

Weld Ring Gruv-Ring Coupling



The Gruvlok® Figure 7022 coupling with Gruv-Ring forms a flexible grooved end pipe joint for use on steel pipe. Services for this versatile connection include large O.D. mining applications such as process, tailings and slurries. The coupling's multi-segment design supplies optimum strength for working pressures to 175 PSI.

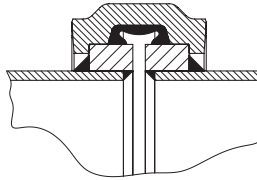


Fig. 7022 with
Type C Ring

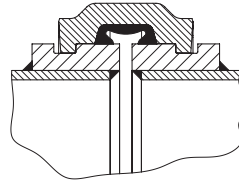


Fig. 7022 with
Type D Ring

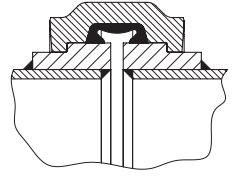


Fig. 7022 with
Type E Ring

MATERIAL SPECIFICATIONS

BOLTS:

SAE J429, Grade 5, Zinc Electroplated

HEAVY HEX NUTS:

ASTM A563, Grade A, Zinc Electroplated

STAINLESS STEEL BOLTS & NUTS:

304SS bolts and nuts are available as a standard option.
(316SS are available for special order).

HOUSING:

Ductile Iron conforming to ASTM A 536, Grade 65-45-12

COATINGS:

- ☐ Rust inhibiting paint – Color: ORANGE (standard)
 - ☐ Hot Dipped Zinc Galvanized (optional)
 - ☐ Other Colors Available (IE: RAL3000 and RAL9000)
- For other Coating requirements contact an Anvil Representative.

GASKETS: Materials

Properties as designated in accordance with ASTM D 2000

- ☐ Grade “E” EPDM (Green color code)
-40°F to 230°F (Service Temperature Range)(-40°C to 110°C)
Recommended for water service, diluted acids, alkalis solutions,
oil-free air and many other chemical services.
NOT FOR USE IN PETROLEUM APPLICATIONS.

- ☐ Grade “T” Nitrile (Orange color code)
-20°F to 180°F (Service Temperature Range)(-29°C to 82°C)
Recommended for petroleum applications, air with oil vapors and
vegetable and mineral oils.
NOT FOR USE IN HOT WATER OR HOT AIR

GASKET TYPE:

C Style cross section featuring an enhanced larger cross section to
provide optimal sealing throughout the range of pipe dimensional
variations and operating conditions.

LUBRICATION:

- ☐ Standard
- ☐ Gruvlok Xtreme™

PROJECT INFORMATION		APPROVAL STAMP	
Project:		<input type="checkbox"/> Approved	
Address:		<input type="checkbox"/> Approved as noted	
Contractor:		<input type="checkbox"/> Not approved	
Engineer:		Remarks:	
Submittal Date:			
Notes 1:			
Notes 2:			

FIG. 7022

Weld Ring Gruv-Ring Coupling

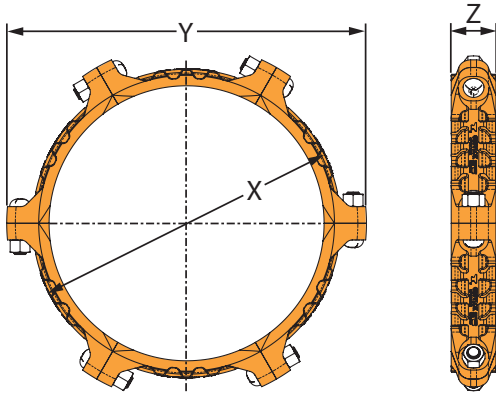


FIGURE 7022 WELD RING GRUV-RING COUPLING

Nominal Size	Pipe O.D. Range	Applied Gruv-Ring O.D.	Max. Working Pressure	Max. End Load	Range of Pipe End Separation	Deflection from \bar{C}		Coupling Dimensions			Number of Segments	Coupling Bolts		Approx. Wt. per Segment	Total Assembly Weight
						Per Coupling	of Pipe	X	Y	Z		Qty.	Size		
In.	In./mm	In./mm	PSI/kPa	Lbs./N	In./mm	Degrees(°)	In./ft-mm/m	In./mm	In./mm	In./mm			In./mm	Lbs./kg	Lbs./kg
30	28.00 - 32.00 711.2 - 812.8	33.75 857	175 1207	156,558 696,405	0-1½ 0-12.7	0.85	0.18 15.0	37.00 940	43.25 1099	5.375 137	6	6	1½ x 5¾	42 19.1	250 113.4
36	34.00 - 38.00 863.6 - 965.2	40.19 1021	175 1207	221,978 987,407	0-1½ 0-12.7	0.72	0.15 12.5	43.47 1104	50.00 1270	5.375 137	6	6	1½ x 5¾	48 21.8	290 131.5
42	40.00 - 44.00 1,016.0 - 1,117.6	46.63 1184	175 1207	298,790 1,329,084	0-1½ 0-12.7	0.62	0.12 10.0	49.84 1266	56.50 1435	5.375 137	8	8	1¾ x 6	46 20.8	345 156.5
48	46.00 - 50.00 1,168.4 - 1,270.0	53.13 1350	175 1207	387,905 1,725,488	0-1½ 0-12.7	0.53	0.11 9.2	57.16 1452	62.50 1588	5.500 140	8	16	1¾ x 5¾	73 32.9	580 263.1
54	52.00 - 56.00 1,320.8 - 1,422.4	59.69 1516	175 1207	489,660 2,178,116	0-1½ 0-12.7	0.48	0.10 8.3	63.60 1615	69.28 1760	5.625 143	8	16	1½ x 5¾	81 36.7	650 294.8
60	58.00 - 64.00 1,473.2 - 1,625.6	66.19 1681	175 1207	602,116 2,678,346	0-1½ 0-12.7	0.43	0.09 7.5	70.00 1778	75.71 1923	5.750 146	10	20	1½ x 5¾	76 34.3	750 340.2

NOTE: Impact gun can be used for installation, verify that the output of the impact gun is within the required torque range.

For additional details see "Coupling Data Chart Notes" in the Introduction Section of the Gruvlok Catalog.
For additional Bolt Torque information, contact an Anvil Representative.

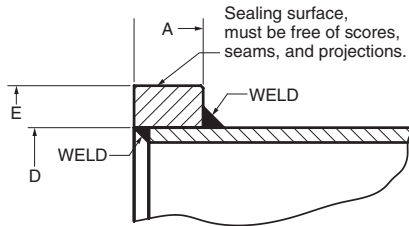
GRUV-RING WELDED SHOULDER RINGS

For use with Fig. 7022 Couplings

MATERIAL: ASTM A105

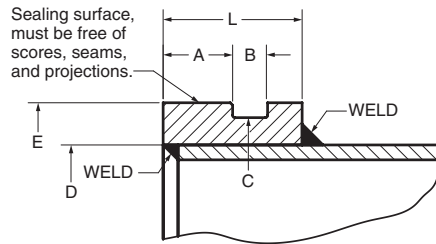
Additional material options available upon request.

TYPE C



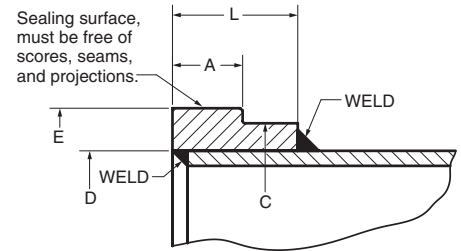
D - Ring I.D. based on Pipe O.D. Dimensions.

TYPE D



D - Ring I.D. based on Pipe O.D. Dimensions.

TYPE E



D - Ring I.D. based on Pipe O.D. Dimensions.

GRUV-RING TYPE C

Size	Gasket Seat	Ring O.D.
	A	E
In./mm	In./mm	In./mm
30	1.75	33.75
750	44.5	857.3
36	1.75	40.19
900	44.5	1020.8
42	1.75	46.63
1050	44.5	1184.3
48	1.75	53.13
1200	44.5	1349.4
54	1.75	59.69
1375	44.5	1516.1
60	1.75	66.19
1500	44.5	1681.2

GRUV-RING TYPE D

Size	Gasket Seat	Groove Width	Groove Diameter	Ring O.D.	Ring Width
	A	B	C	E	L
In./mm	In./mm	In./mm	In./mm	In./mm	In./mm
30	1.75	0.88	33.00	33.75	3.50
750	44.5	22.2	838.2	857.3	88.9
36	1.75	0.94	39.44	40.19	3.50
900	44.5	23.8	1001.7	1020.8	88.9
42	1.75	1.00	45.81	46.63	3.62
1050	44.5	25.4	1163.6	1184.3	91.9
48	1.75	1.06	52.19	53.13	3.88
1200	44.5	27.0	1349.4	1349.4	98.4
54	1.75	1.13	58.63	59.69	3.88
1375	44.5	28.6	1489.1	1516.1	98.4
60	1.75	1.13	65.06	66.19	3.88
1500	44.5	28.6	1652.6	1681.2	98.4

GRUV-RING TYPE E

Size	Gasket Seat	Groove Diameter	Ring O.D.	Ring Width
	A	C	E	L
In./mm	In./mm	In./mm	In./mm	In./mm
30	1.75	33.00	33.75	3.50
750	44.5	838.2	857.3	88.9
36	1.75	39.44	40.19	3.50
900	44.5	1001.7	1020.8	88.9
42	1.75	45.81	46.63	3.62
1050	44.5	1163.6	1184.3	91.9
48	1.75	52.19	53.13	3.88
1200	44.5	1349.4	1349.4	98.4
54	1.75	58.63	59.69	3.88
1375	44.5	1489.1	1516.1	98.4
60	1.75	65.06	66.19	3.88
1500	44.5	1652.6	1681.2	98.4


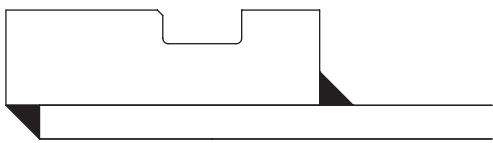
Gruz-Rings are not to be considered as pipe reinforcement. Additional provision must be provided by the piping system designer if reinforcement is required.

GRUV-RING WELDED SHOULDER RINGS

For use with Fig. 7022 Couplings

When ordering, please provide the required information below to your Anvil Representative.

JOINT TYPE		
<input type="checkbox"/> Pipe to Pipe (Two Rings Required)		
<input type="checkbox"/> Pipe to Shoulder (One Ring Required)		
APPLICATION		
Fluid Media:		
Working Pressure:		
Test Pressure:		
Temperature:	Minimum:	Maximum:
PIPE SPECIFICATION		
Pipe Material:		
Nominal Pipe Size:		
Measured Pipe OD:		
Pipe Schedule:		
Wall Thickness:		
COUPLING CONFIGURATION		
Size:		
Number of Joints:		
Gasket Materials:		
<input type="checkbox"/> Grade "E" EPDM (Green color code)		
<input type="checkbox"/> Grade "T" Nitrile (Orange color code)		
Coupling Finish:		
<input type="checkbox"/> Rust inhibiting paint – Color: Orange (standard)		
<input type="checkbox"/> Hot Dipped Zinc Galvanized (optional)		
<input type="checkbox"/> Other Colors Available (IE: RAL3000 and RAL9000)		
LINED PIPE (optional)		
<input type="checkbox"/> Abrasive		
<input type="checkbox"/> Corrosive		
Lined Thickness:		
Lined Material:		

GRUV-RING TYPE
<input type="checkbox"/> Type C 
<input type="checkbox"/> Type D 
<input type="checkbox"/> Type E 