

Butterfly Valves

Features:

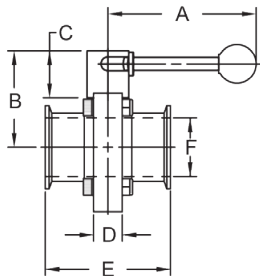
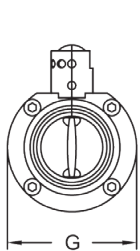
- available with three handle options:
 - The *pull style handle* allows you to set the valve in four different positions simply by pulling and turning.
 - The *infinite handle* has incremental marks on the top which can be used when needing a throttling valve.
 - The *trigger handle* offers twelve positions which make it easy to understand how to actuate the valve.
- Handle is not assembled when shipped. To order with handle assembled on the valve please request assembly in the special instructions of your order.
- 100% hydraulic tested / 100% inspected
- all wetted surfaces are sanitary finished to < 32R_a
- field serviceable (no special tools required)
- various end configurations available: weld, I-line, Q-line, bevel seat and John Perry
- actuation available: double-acting, air-to-spring, electric, call Dixon™ for details
- vacuum rating: 0.4 inches Hg at 68°F
- temperature range: **15°F to 200°F**
- clamp style is standard

Clamp End Butterfly Valve with Pull Handle - [A]



Size	316L Stainless Steel with Silicone Seats		316L Stainless Steel with FKM Seats		316L Stainless Steel with EPDM Seats	
	Part #	Price/E	Part #	Price/E	Part #	Price/E
1/2"	B5101S050CC-A	\$332.55	B5101V050CC-A	\$359.70	B5101E050CC-A	\$326.45
3/4"	B5101S075CC-A	332.55	B5101V075CC-A	359.70	B5101E075CC-A	326.45
1"	B5101S100CC-A	320.40	B5101V100CC-A	340.90	B5101E100CC-A	306.80
1 1/2"	B5101S150CC-A	304.35	B5101V150CC-A	347.95	B5101E150CC-A	296.65
2"	B5101S200CC-A	368.60	B5101V200CC-A	430.85	B5101E200CC-A	358.00
2 1/2"	B5101S250CC-A	460.60	B5101V250CC-A	589.75	B5101E250CC-A	437.10
3"	B5101S300CC-A	615.30	B5101V300CC-A	817.85	B5101E300CC-A	596.90
4" ¹	B5101S400CC-A	948.00	B5101V400CC-A	1408.75	B5101E400CC-A	918.30
6"	B5101S600CC-A	2143.95	---	---	B5101E600CC-A	2121.15
8"	---	---	---	---	B5101E800CC-A	6146.35

¹ 4" high pressure butterfly valve is available, call Dixon™ for more information

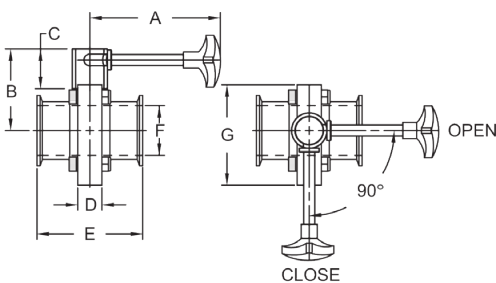


Size	Dimensions							Break Torque (in. lbs.) Silicone	Break Torque (in. lbs.) FKM	Break Torque (in. lbs.) EPDM	PSI @ 68°F
	A	B	C	D	E	F	G				
1/2"	4.4"	2.8"	1.4"	0.9"	3.5"	.37"	3.1"	20	70	75	140
3/4"	4.4"	2.8"	1.4"	0.9"	3.5"	.62"	3.1"	20	70	75	140
1"	4.4"	2.8"	1.4"	0.9"	3.5"	0.9"	3.1"	20	70	75	140
1 1/2"	4.4"	2.8"	1.4"	0.9"	3.5"	1.4"	3.1"	40	125	130	140
2"	4.4"	3.1"	1.4"	0.9"	3.8"	1.9"	3.9"	55	175	165	140
2 1/2"	4.4"	3.5"	1.4"	0.9"	3.8"	2.4"	4.6"	70	220	210	110
3"	6.2"	3.8"	1.3"	1.2"	4.1"	2.9"	5.2"	165	310	350	110
4"	6.2"	4.5"	1.3"	1.2"	4.8"	3.8"	6.7"	350	450	540	85
6"	11.5"	5.5"	1.3"	1.2"	5.5"	5.8"	8.5"	700	n/a	1550	60
8"	18.0"	6.9"	1.6"	1.2"	4.9"	7.8"	11.2"	n/a	n/a	1650	60

Clamp End Butterfly Valves with Infinite Position Handle - [B]



Size	316L Stainless Steel with Silicone Seats		316L Stainless Steel with FKM Seats		316L Stainless Steel with EPDM Seats	
	Part #	Price/E	Part #	Price/E	Part #	Price/E
1/2"	B5101S050CC-B	\$332.55	B5101V050CC-B	\$359.70	B5101E050CC-B	\$326.45
3/4"	B5101S075CC-B	332.55	B5101V075CC-B	359.70	B5101E075CC-B	326.45
1"	B5101S100CC-B	312.90	B5101V100CC-B	340.90	B5101E100CC-B	306.80
1 1/2"	B5101S150CC-B	304.35	B5101V150CC-B	347.95	B5101E150CC-B	296.65
2"	B5101S200CC-B	368.60	B5101V200CC-B	430.85	B5101E200CC-B	358.00
2 1/2"	B5101S250CC-B	460.60	B5101V250CC-B	589.75	B5101E250CC-B	437.10
3"	B5101S300CC-B	615.30	B5101V300CC-B	817.85	B5101E300CC-B	596.90
4"	B5101S400CC-B	948.00	B5101V400CC-B	1408.75	B5101E400CC-B	918.30



Size	Dimensions							Break Torque (in. lbs.) Silicone	Break Torque (in. lbs.) FKM	Break Torque (in. lbs.) EPDM	PSI @ 68°F
	A	B	C	D	E	F	G				
1/2"	4.3"	2.6"	1.3"	0.9"	3.5"	.37"	3.1"	20	70	75	140
3/4"	4.3"	2.6"	1.3"	0.9"	3.5"	.62"	3.1"	20	70	75	140
1"	4.3"	2.6"	1.3"	0.9"	3.5"	0.9"	3.1"	20	70	75	140
1 1/2"	4.3"	2.6"	1.3"	0.9"	3.5"	1.4"	3.1"	40	125	130	140
2"	4.3"	2.9"	1.3"	0.9"	3.8"	1.9"	3.9"	55	175	165	140
2 1/2"	4.3"	3.3"	1.3"	0.9"	3.8"	2.4"	4.6"	70	220	210	110
3"	6.4"	3.6"	1.3"	1.2"	4.1"	2.9"	5.2"	165	310	350	110
4"	6.4"	4.4"	1.3"	1.2"	4.8"	3.8"	6.7"	350	450	540	85