

## Clamp Gaskets

Silicone Clamp Gaskets - *White*

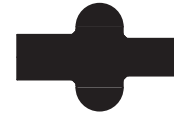
Size	Part #	Price/E
1/2"	<b>42MP-XW50</b>	<b>\$2.95</b>
3/4"	<b>42MP-XW75</b>	<b>3.25</b>
1"	<b>40MP-XW100</b>	<b>3.20</b>
1 1/2"	<b>40MP-XW150</b>	<b>2.70</b>
2"	<b>40MP-XW200</b>	<b>3.20</b>
2 1/2"	<b>40MP-XW250</b>	<b>4.30</b>
3"	<b>40MP-XW300</b>	<b>4.65</b>
4"	<b>40MP-XW400</b>	<b>5.65</b>
6"	<b>40MP-XW600</b>	<b>37.80</b>

Type 1 - Standard  
1/2" - 3/4"Type 1 - Standard  
1" and larger**Features:**

- color code: pink dot
- peroxide cured
- meets 21CFR 177.2600
- passed USP Class VI Cytotoxicity testing

Silicone Clamp Gaskets - *Clear*

Size	Part #	Price/E
1/2"	<b>42MP-XC50</b>	<b>\$2.95</b>
3/4"	<b>42MP-XC75</b>	<b>3.25</b>
1"	<b>40MP-XC100</b>	<b>4.30</b>
1 1/2"	<b>40MP-XC150</b>	<b>4.30</b>
2"	<b>40MP-XC200</b>	<b>4.45</b>
2 1/2"	<b>40MP-XC250</b>	<b>5.25</b>
3"	<b>40MP-XC300</b>	<b>6.00</b>
4"	<b>40MP-XC400</b>	<b>8.30</b>

Type 1 - Standard  
1/2" - 3/4"Type 1 - Standard  
1" and larger**Features:**

- color code: no dot
- peroxide cured
- meets 21CFR 177.2600

PTFE Clamp Gaskets - *White*

Size	Part #	Price/E
1/2"	<b>42MP-G50</b>	<b>\$3.20</b>
3/4"	<b>42MP-G75</b>	<b>2.95</b>
1"	<b>40MP-G100</b>	<b>2.80</b>
1 1/2"	<b>40MP-G150</b>	<b>2.00</b>
2"	<b>40MP-G200</b>	<b>2.45</b>
2 1/2"	<b>40MP-G250</b>	<b>3.25</b>
3"	<b>40MP-G300</b>	<b>3.25</b>
4"	<b>40MP-G400</b>	<b>9.45</b>
5"	<b>40MP-G500</b>	<b>76.45</b>
6"	<b>40MP-G600</b>	<b>42.05</b>
8"	<b>40MP-G800</b>	<b>72.30</b>
10"	<b>40MP-G1000</b>	<b>86.20</b>
12"	<b>40MP-G1200</b>	<b>235.45</b>

Type 1 - Standard  
1/2" - 3/4"Type 1 - Standard  
1" and larger**Features:**

- color code: no dot
- meets 21CFR 177.1550
- passed USP Class VI Cytotoxicity testing
- not recommended for use with bolted clamps



PTFE is a material subject to plastic flow. When cycled through heat and then cooled down in process lines, PTFE gaskets will not return to the original configuration and it will continue to compress as the cycling continues. This plastic flow will allow leakage if clamp torques are not maintained.

See pages 471-472 for sizing charts.