



JOB NAME:	CONTRACTOR:
JOB LOCATION:	APPROVAL:
ENGINEER:	CONTRACTOR P.O.:
APPROVAL:	REPRESENTATIVE:

EN500N

RUBBER-LINED DIRECT MOUNT, WAFER STYLE BUTTERFLY VALVE WITH EPDM SEATS AND NYLON DISC WITH VALBIA ELECTRIC ACTUATOR

SIZES 2" TO 12"

E530N - VITON SEATS

EN500S

RUBBER-LINED DIRECT MOUNT, WAFER STYLE BUTTERFLY VALVE WITH EPDM SEATS AND STAINLESS STEEL DISC WITH VALBIA ELECTRIC ACTUATOR

SIZES 1-1/2" TO 12"

E530S - VITON SEATS

E540S - BUNA SEATS

*001 12V AC/DC	*002 24V AC/DC	*003 100-240V AC
01 BATTERY BACKUP	*02* POSITIONER	*04* BATTERY BACKUP W POSITIONER

SPECIFICATIONS

Bonomi North America series EN500N and EN500S, cast iron wafer style, epoxy coated, resilient seat butterfly valves in sizes 1-1/2"-12", with EPDM seat are NSF/ANSI 61/372 certified.

This series shall offer a dual stem design and ISO 5211/DIN 3337 direct mounting for high cycle automation capabilities.

In addition, the EN500N-EN500S series features a phenolic-backed cartridge seat design which offers a 250 CWP maximum pressure rating, dead-end service to 100 PSI, and conforms to ANSI B16.1 and ANSI B16.5

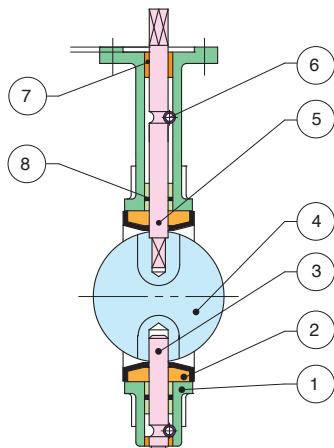
The EN500 Series includes an electric actuator with a high-strength, weather-proof technopolymer housing with a heater and thermostat included. The NEMA 4, 4X housing is resistant to dusty areas, and in areas where water may be sprayed.

ACTUATOR FEATURES

- NEMA 4, 4X IP67 Housing
- Dual voltage motors
- ISO 5211 dual patterns
- 75% Duty Cycle
- High-Strength, Impact Resistant IP67 Technopolymer Housing
- Temperature Range -4°F to 131°F
- PG11 Electrical Connection/Optional 1/2" Conduit

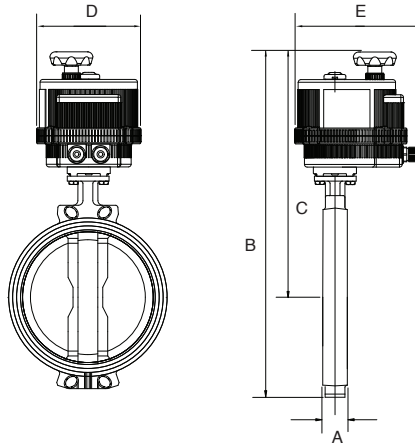
VALVE FEATURES

- ISO 5211 Direct Mount/Square Stem
- Epoxy coated Ductile Iron Wafer body
- EPDM resilient seat (-30°F TO 250°F)
- 530N/530S - VITON seats (10°F TO 300°F)
- 540S - BUNA seats (10°F TO 250°F)
- API609 face to face flange
- Floating dual shaft disc design
- MSS SP 67 compliant
- No pins in disc prevent potential leak points
- NSF/ANSI 61, 372 approved



BILL OF MATERIALS

N POS	PART NAME	MODEL	MATERIAL	N PCS
1	BODY		CAST IRON	1
2	SEAT	N500N/N500S	EPDM (-30°F TO 250°F)	1
		530N/530S	VITON (10°F TO 300°F)	
		540S	BUNA (10°F TO 250°F)	
3	LOWER SHAFT		SS416	1
4	DISC 500N		CAST IRON / NYLON 11 COATED	1
	DISC 500S		STAINLESS STEEL	
5	UPPER SHAFT		SS416	1
6	LOCATING PIN		CARBON STEEL	1
7	BUSHING		P.T.F.E.	1
8	O-RING		EPDM	1
9	LEVER		EPOXY-COATED CARBON STEEL	1



Note: EPDM Seats Std. Other Seating Material Available

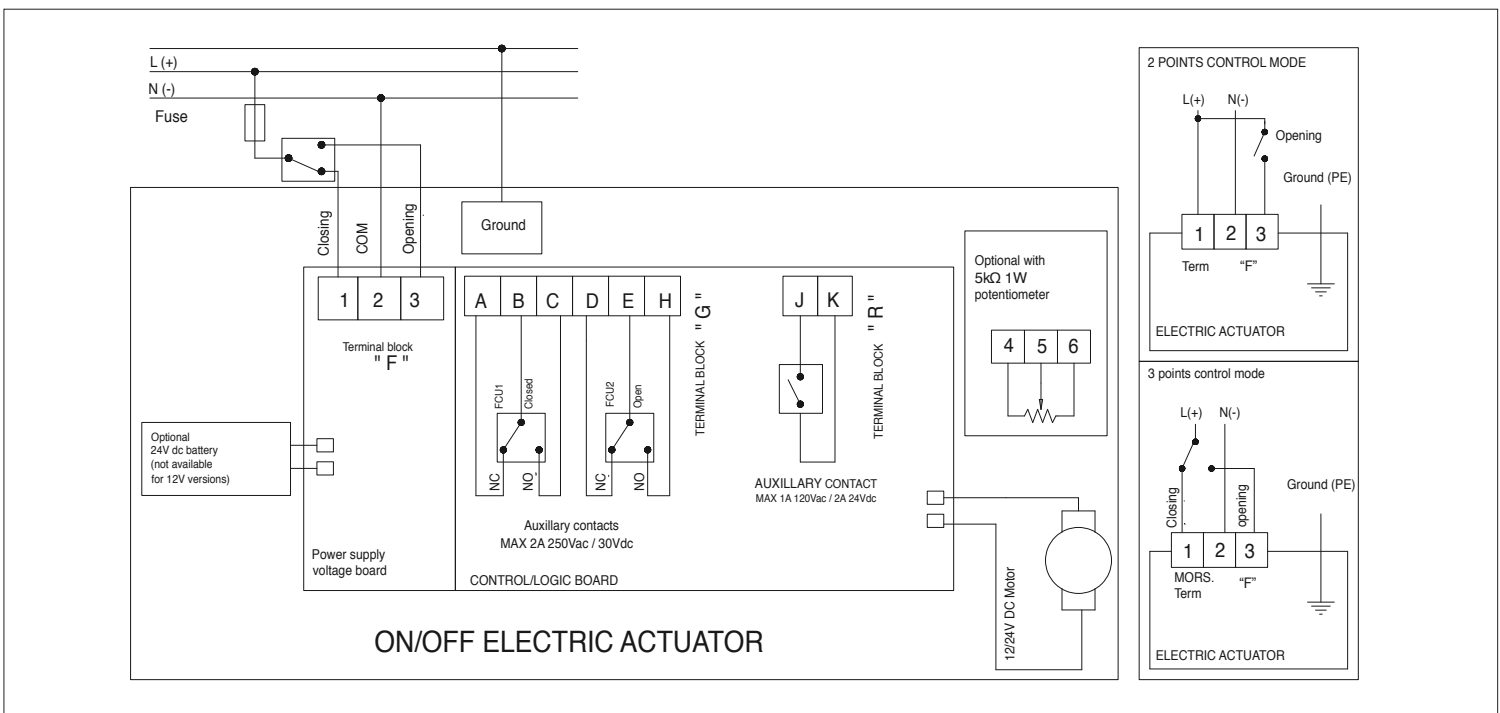
DIMENSIONS

Size		1-1/2" *	2"	2-1/2"	3"	4"	5"	6"	8"	10"	12" **
A		1.30	1.69	1.81	1.81	2.05	2.20	2.20	2.36	2.58	3.03
B		13.18	14.09	14.56	14.84	15.59	16.22	17.41	18.59	28.68	31.99
C		11.43	11.61	11.96	12.2	12.95	13.46	14.61	16.03	20.69	22.46
D		7.28	7.28	7.28	7.28	7.28	7.28	8.31	8.31	8.74	8.74
E		8.43	8.43	8.43	8.43	8.43	8.43	9.33	9.33	9.72	9.72
Seat Torque	100 psi	111	126	134	205	339	523	677	1205	1890	2808
	200 psi	133	146	167	223	386	602	996	1864	3140	4767
Cv (GPM @1psi)	50% OP	35	45	65	70	140	235	360	715	1225	1900
	100% OP	108	135	220	300	605	1010	1620	3205	5305	8250
Act.		VB030	VB030	VB030	VB030	VB060	VB110	VB190	VB270	VB350	VB350

* 1-1/2" available in Stainless Steel Disc only ** - Liquid Service = 100 psi Maximum

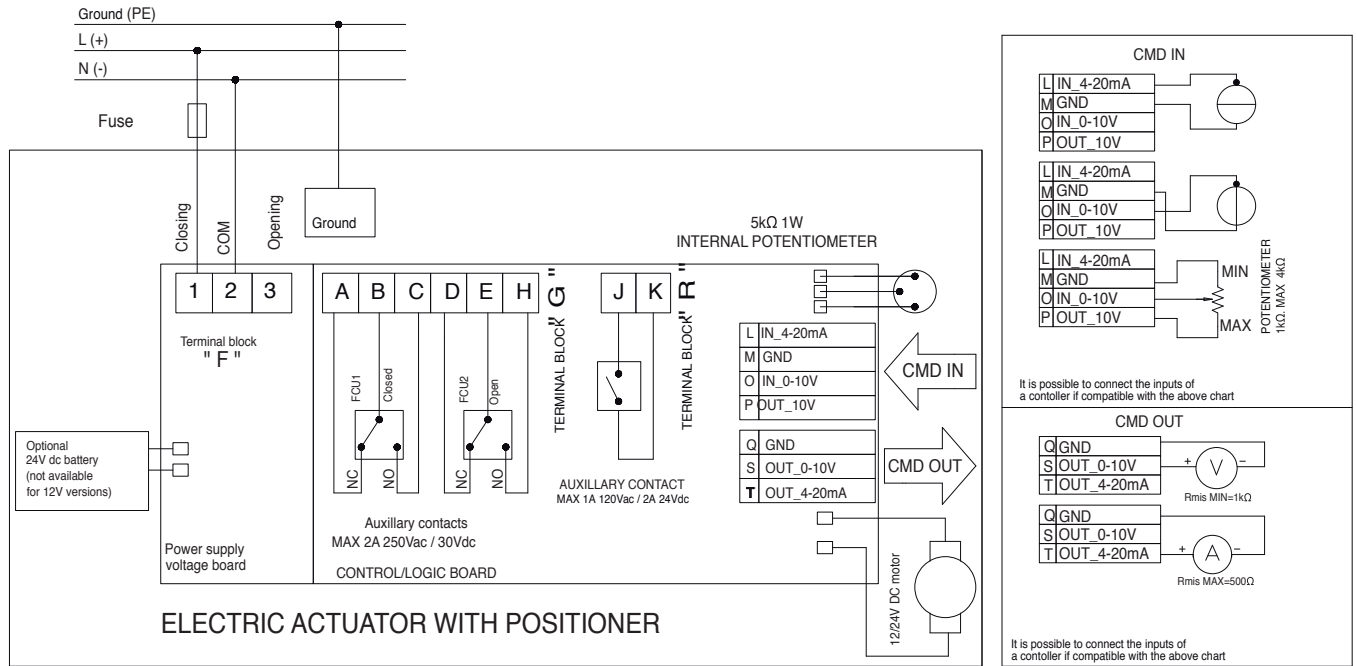
ON/OFF WIRING DIAGRAM

12V AC/DC, 24V AC/DC & 100-240VAC



POSITIONER WIRING DIAGRAM

12V AC/DC, 24V AC/DC & 100-240VAC



The power supply COM signal (pin "2" terminal block "F") cannot share the same electrical command ground signal (pin "GND" terminal block "CDM IN") or feedback ground signal (pin "GND" terminal block "CDM OUT").

3-POSITION WIRING DIAGRAM - 3-WAY VALVES ONLY

12V AC/DC, 24V AC/DC & 100-240VAC

