



JOB NAME:	CONTRACTOR:
JOB LOCATION:	APPROVAL:
ENGINEER:	CONTRACTOR P.O.:
APPROVAL:	REPRESENTATIVE:

8E067-00*

700076 DIRECT MOUNT, 2-WAY STAINLESS STEEL, FULL PORT BALL VALVE WITH VALBIA ELECTRIC ACTUATOR

SIZES 1/4" TO 3"

*001	12V AC/DC	*002	24V AC/DC	*003	100-240V AC
01	BATTERY BACKUP	*02*	POSITIONER	*04*	BATTERY BACKUP W POSITIONER

SPECIFICATIONS

The 8E067 packed series is ideally suited for commercial and industrial applications, where space and reliability are at a premium.

The 8E067 package includes a stainless steel 1000 psi full port ball valve along with a Technopolymer housing electric motor.

The NEMA 4/4X motors incorporate dual voltages, 24AC/DC and 100-240VAC, and are standardly furnished with two extra limit switches, a heater and a thermostat, and a torque limiter for added protection.

The NEMA 4/4X housing is resistant to dusty areas and where water may be sprayed.

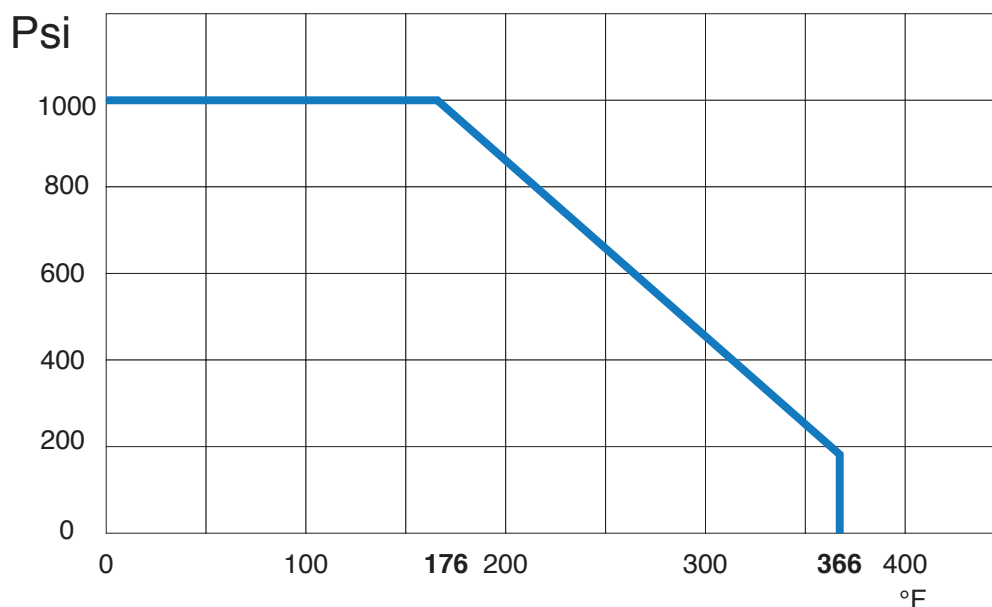
ACTUATOR FEATURES

- NEMA 4, 4X Housing
- 12V/24V AC/DC and 100-240V AC Models Available
- ISO 5211, F03/F05 base with 11mm female drive
- VB015 -12/24V AC - 50% Duty Cycle
- VB030-VB110 - 12/24V DC and 100-240V AC - 75% Duty Cycle
- High-Strength, Impact Resistant IP67 Technopolymer Housing
- Temperature Range -4°F to 131°F
- PG11 Electrical Connection/Optional
- 1/2" Conduit

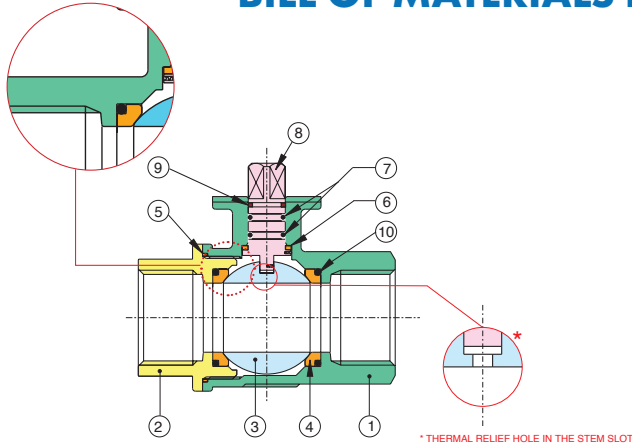
VALVE FEATURES

- CF8M Stainless Steel
- Full Port, Sizes 1/4" to 3"
- ISO 5211 pad
- Pressure rating to 1000 psi, 150 psi steam
- Temperature -4°F to 366°F
- Blow out proof stem
- P.T.F.E. seats with O-ring backing for low operating torque
- P.T.F.E. seals and Double O-ring stem seal design for extended cycle life
- 100% electronically tested in the open and closed position @80 Psi
- Thermal Relief Protection

PRESSURE - TEMPERATURE CHART FOR SERIES 700076



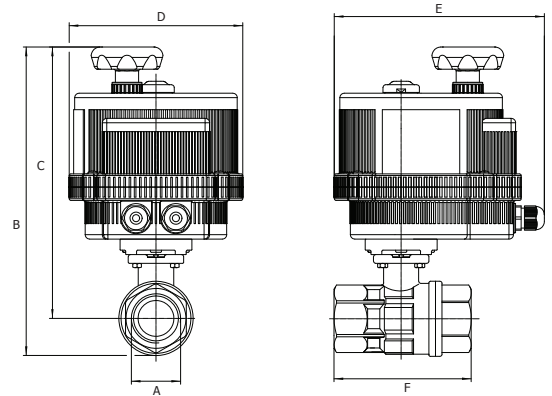
BILL OF MATERIALS FOR 700076



N POS	PART NAME	MATERIAL	N PCS
1	BODY	CF8M	1
2	END CONNECTION	CF8M	1
3	BALL	AISI 316 - CF8M	1
4	BALL SEAT	P.T.F.E.	2
5	SEAL	P.T.F.E.	1
6	STEM SEAL	P.T.F.E.	1
7	O-RING	FKM (Viton®)	2
8	STEM	AISI 316	1
9	STEM SEAL	P.T.F.E.	1
10	O-RING	FKM (Viton®)	2

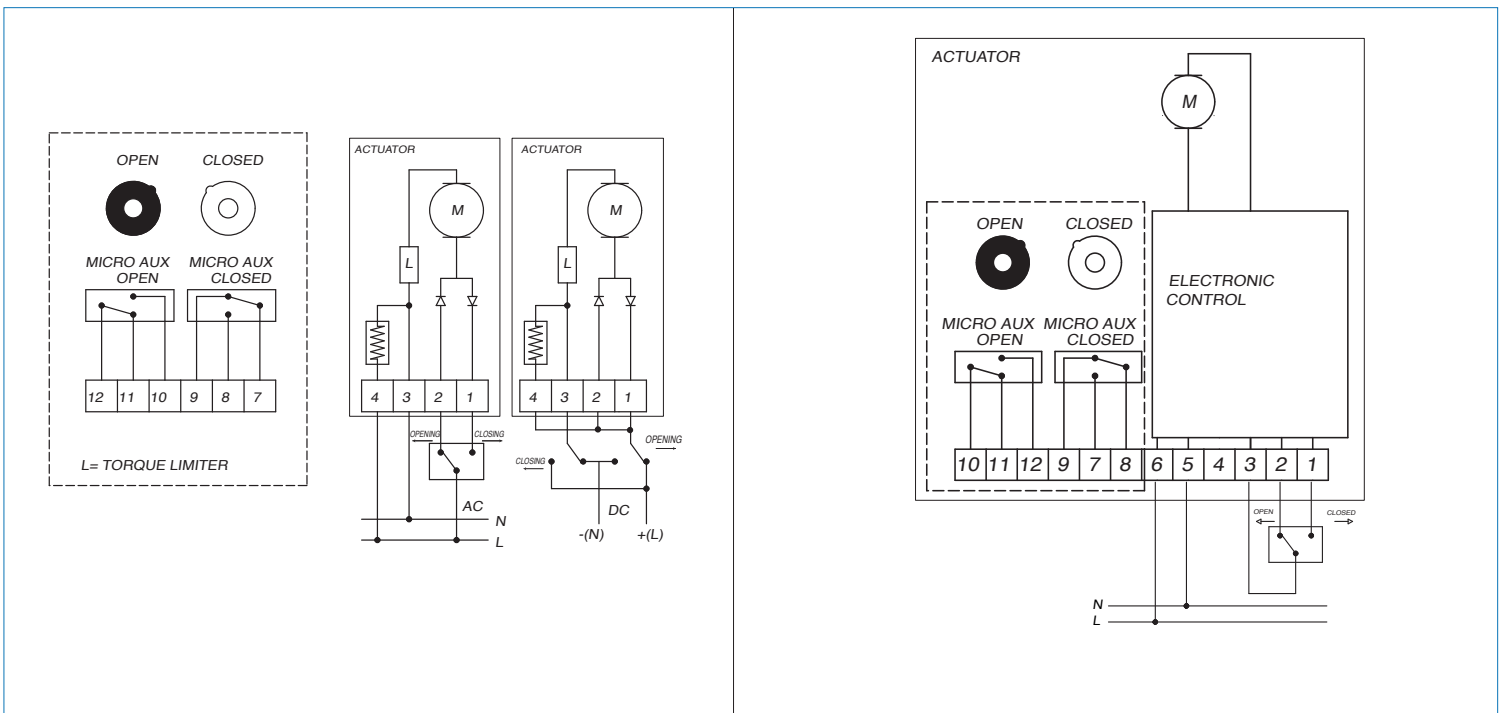
DIMENSIONS

Size	A	B	C	D	E	F	ACT.
1/4"	.250	7.70	7.00	4.84	6.41	2.60	VB015
3/8"	.375	7.70	7.00	4.84	6.41	2.60	VB015
1/2"	.500	7.53	6.85	4.84	6.41	2.63	VB015
3/4"	.750	7.76	6.93	4.84	6.41	3.07	VB015
1"	1.00	8.33	7.32	4.84	6.41	3.54	VB015
1-1/4"	1.25	8.73	7.46	4.84	6.41	3.93	VB015
1-1/2"	1.50	11.3	9.92	6.18	7.50	4.15	VB030
2"	2.00	12.0	10.2	6.18	7.50	4.80	VB030
2-1/2"	2.50	14.2	11.9	7.28	8.43	6.10	VB110
3"	3.00	14.9	12.3	7.28	8.43	6.89	VB110



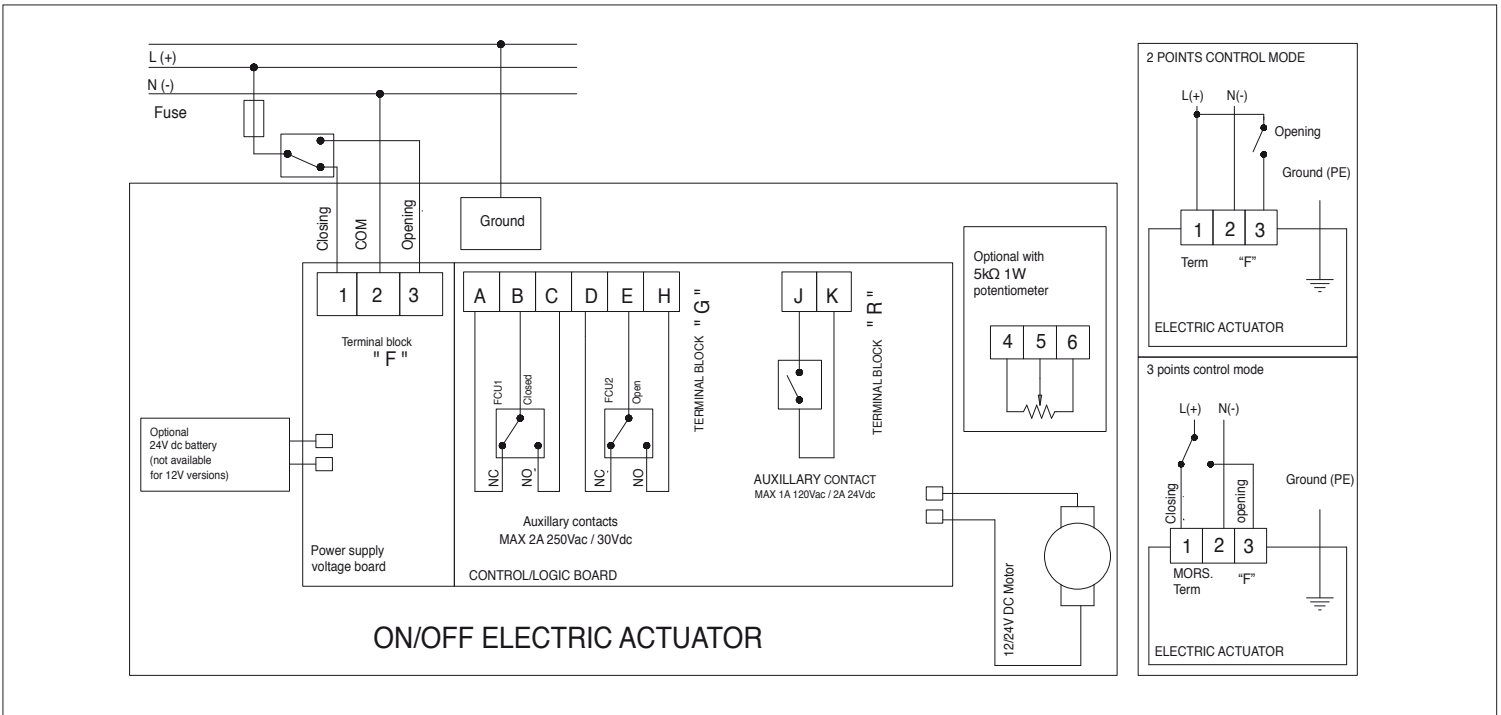
ON/OFF WIRING DIAGRAM - VB015

12V AC/DC, 24V AC/DC & 100-240VAC



ON/OFF WIRING DIAGRAM - VB030 -VB 110

12V AC/DC, 24V AC/DC & 100-240VAC



POSITIONER WIRING DIAGRAM - VB030 -VB 110

12V AC/DC, 24V AC/DC & 100-240VAC

